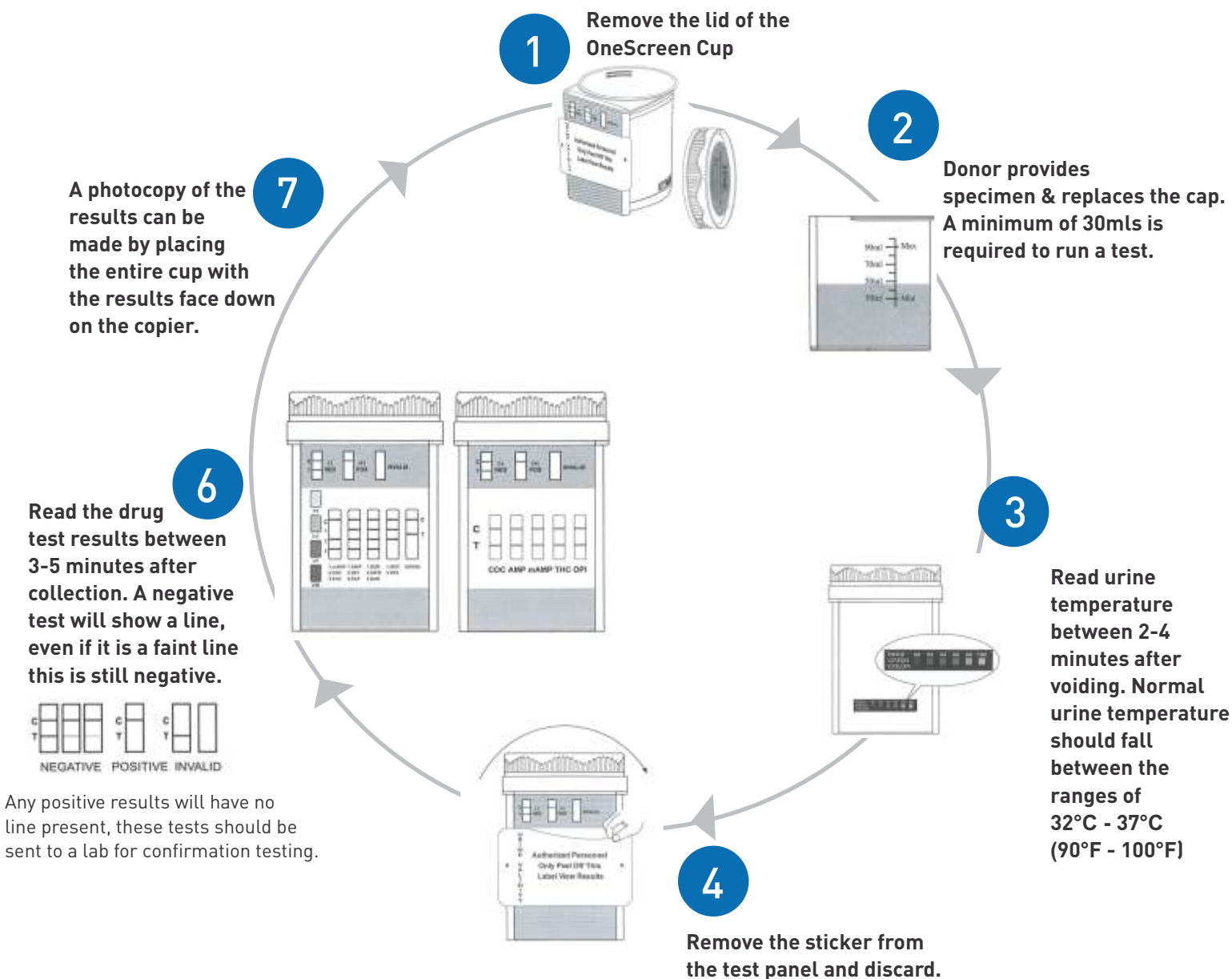


How to Interpret Results - 10 Panel Cup



Sober Check - The leader in certified drug & alcohol testing equipment

call 0800 700 777
visit sobercheck.co.nz

Procedure for OneScreen Cup



step 1

- Check the date on the foil packaging to ensure it is within the expiry date before using
- Remove the OneScreen Cup from foil package by tearing the top off.
- Remove the lid of the OneScreen Cup.



step 2

- Advise the person being tested a minimum of 30mls is required to run a test.
- After the urine sample is collected, screw the lid on tightly.



step 3

- Check the temperature strip between 2-4 minutes after voiding.
- Any faint change in colour on the temperature strip indicates that the urine is at body temperature - 32°C - 37°C (90°F - 100°F).



step 4

- Remove the sticker from the test panel and discard.
- Place the cup on a flat surface.



step 5

- Ensure all the control lines (c) are showing on the test panel, if not the test is invalid.
- Wait for 2-5minutes then read the adulteration test results.



step 6

- Read the drug test results between 3-5 minutes
- A negative test will show a line on the drugs, even if it is a faint line this is still negative.



step 7

- Any positive results will have no line present; these test should then be sent to a lab for confirmation testing.
- Results can be photocopied by placing the entire cup, with the results face down on the copier.

For more information or help on reading a test result contact Sober Check on 0800 700 777